

Acidentes ocorridos nas Rodovias Federais em 2005.

Rodovia BR 153 – GO

(Extensão 703 Km)

Resumo

1.356 Acidentes

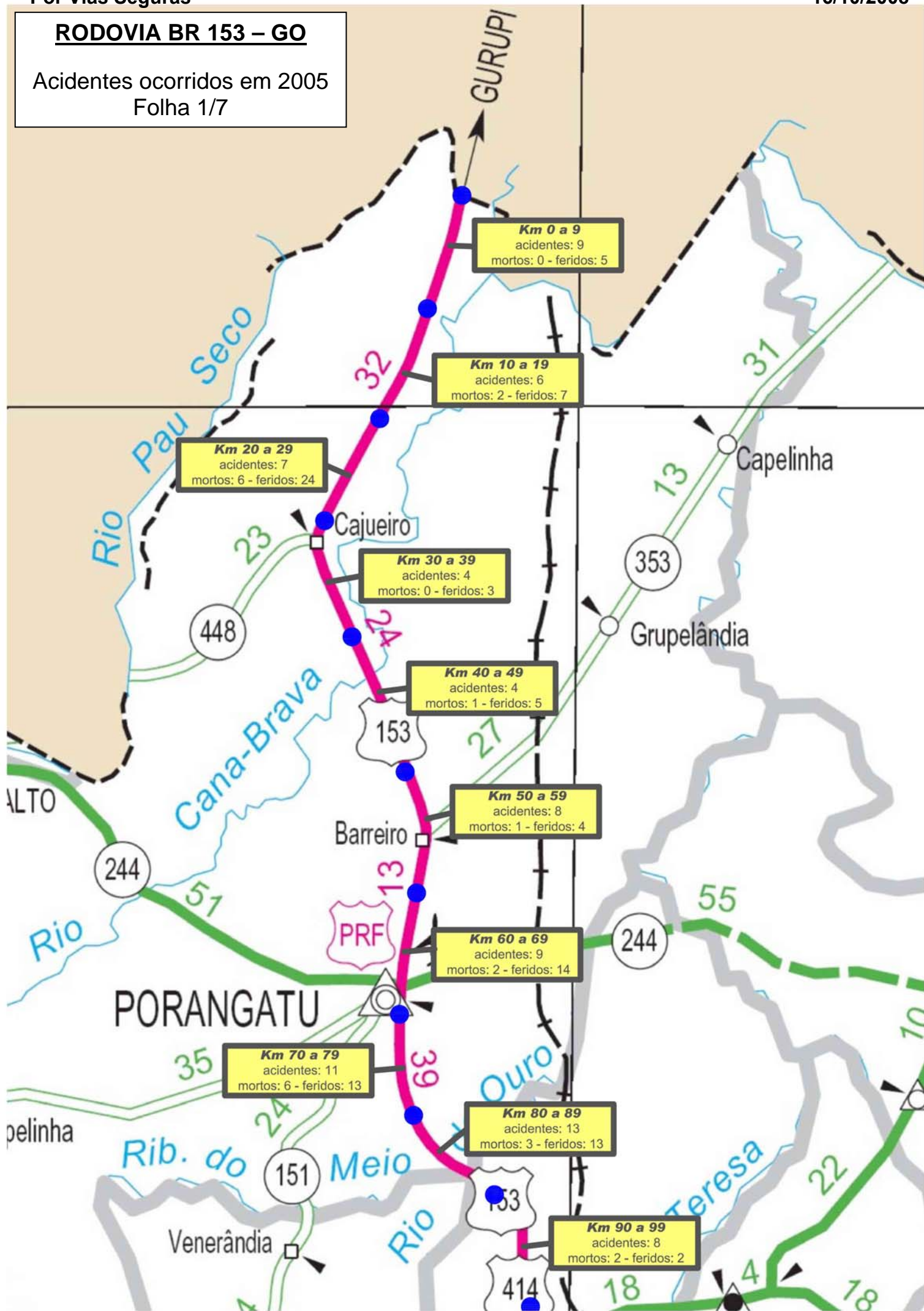
103 Vítimas Fatais

958 Feridos

(entre Anápolis: Km 444 e Goiânia: Km 490, os acidentes foram registrados na BR 060-GO)

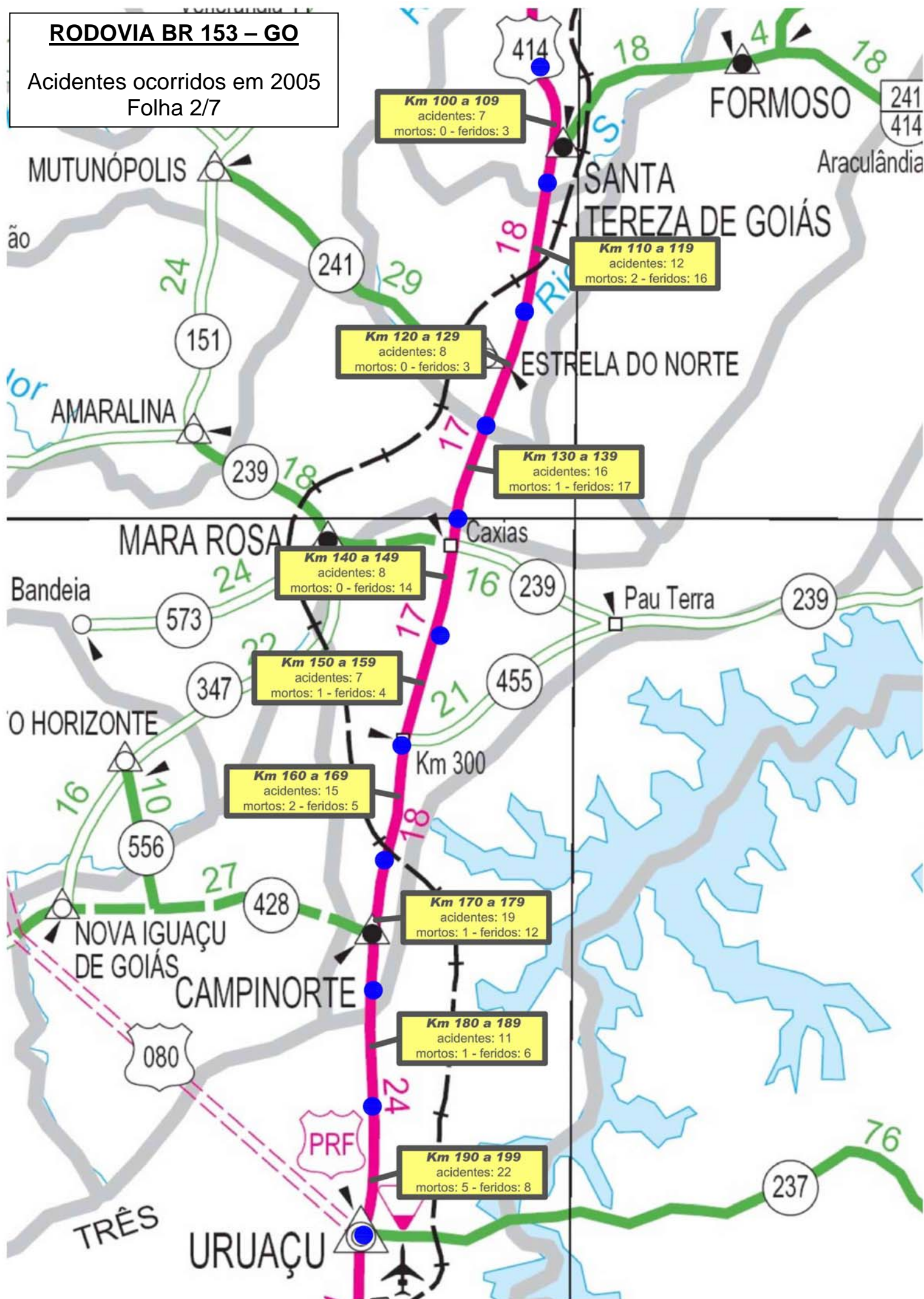
RODOVIA BR 153 – GO

Acidentes ocorridos em 2005
Folha 1/7



RODOVIA BR 153 – GO

Acidentes ocorridos em 2005
Folha 2/7



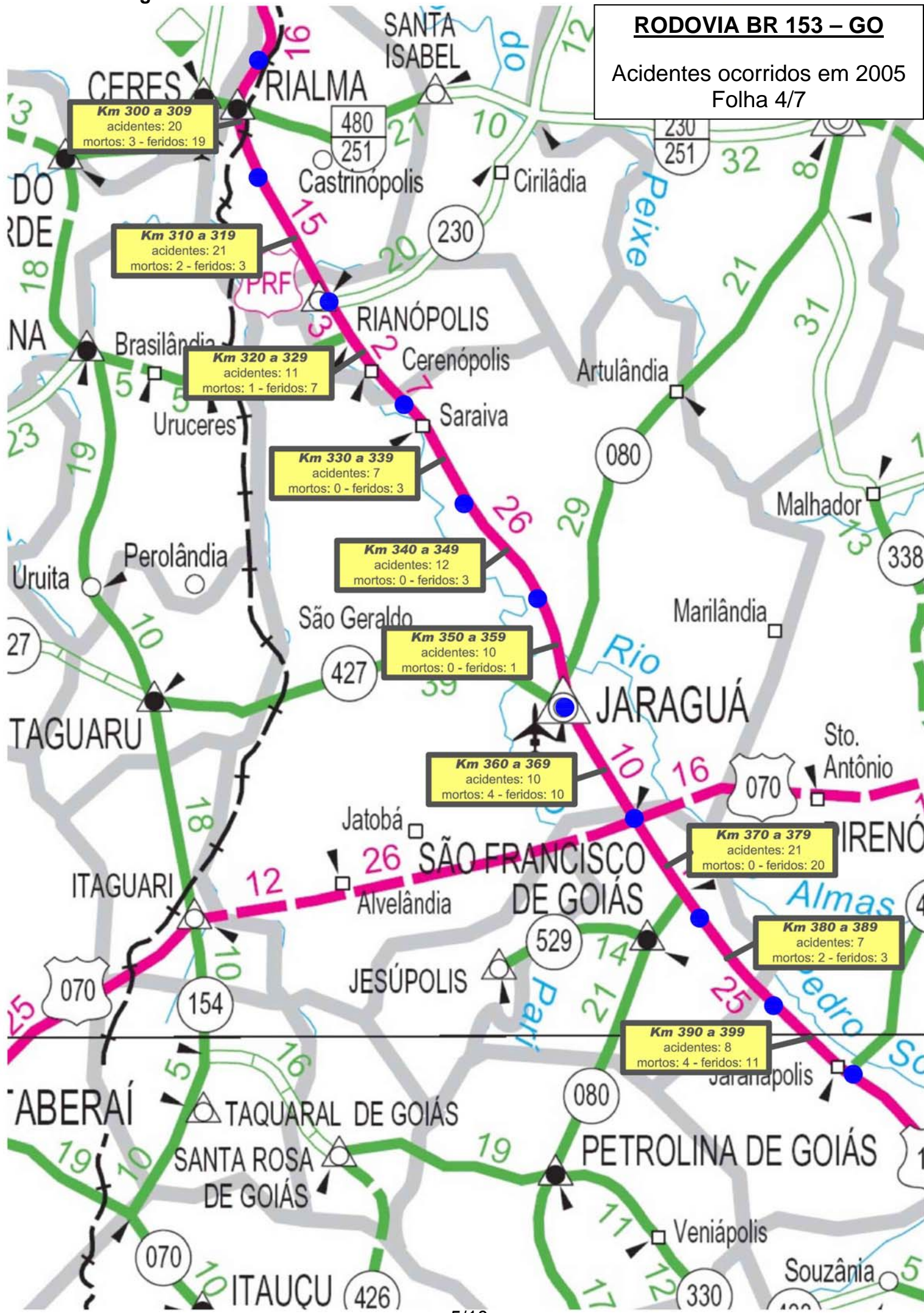
RODOVIA BR 153 – GO

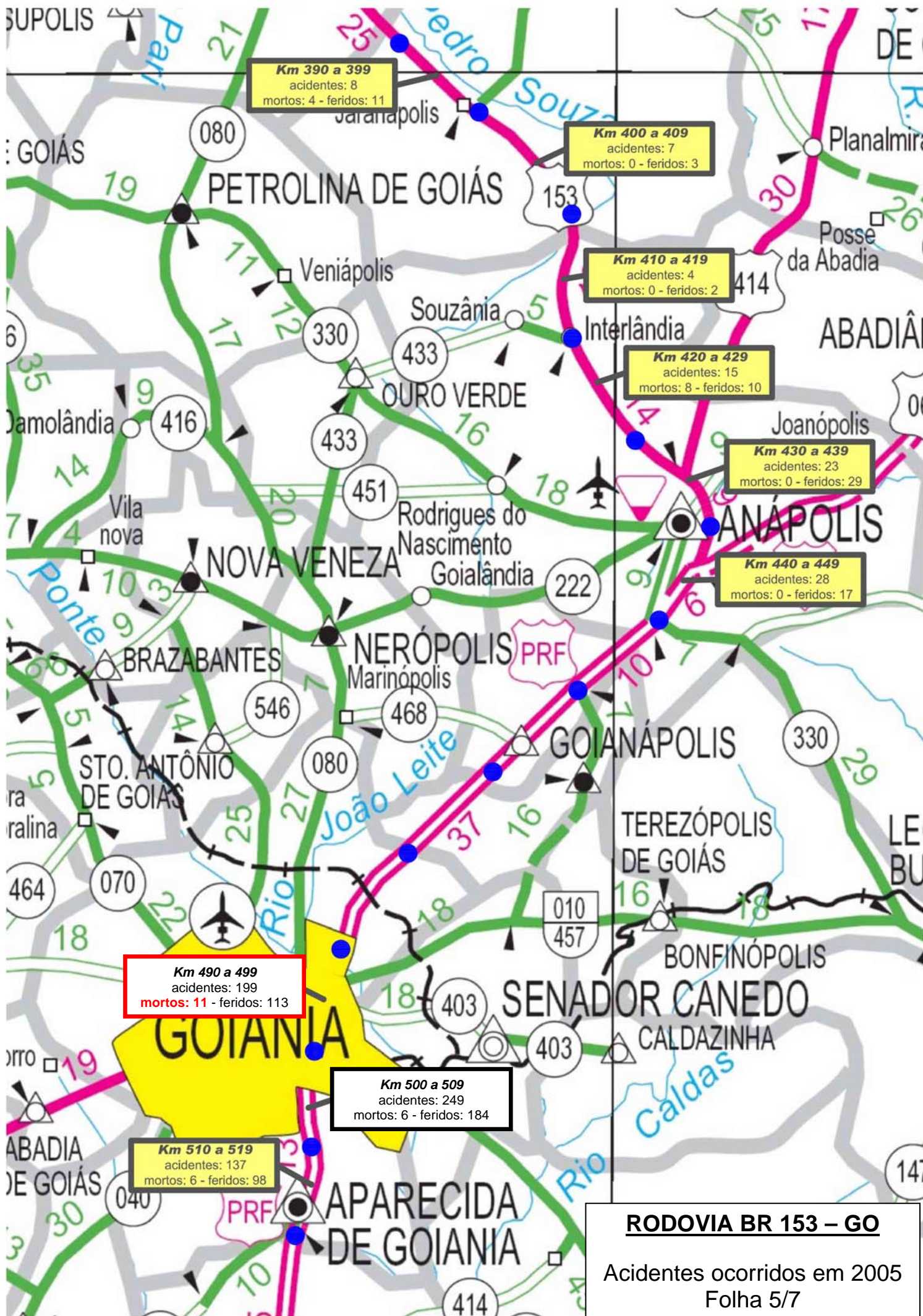
Acidentes ocorridos em 2005
Folha 3/7



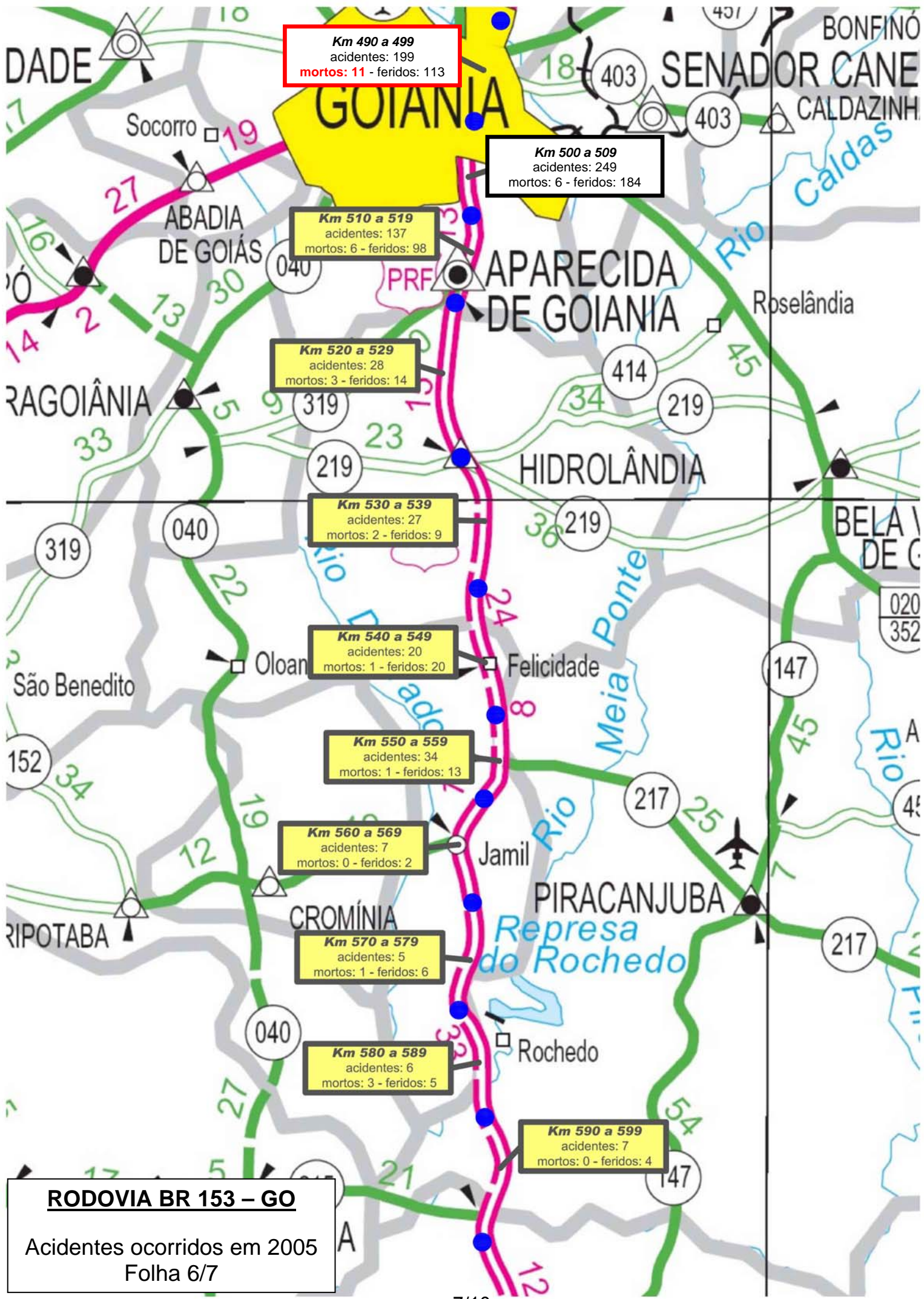
RODOVIA BR 153 – GO

Acidentes ocorridos em 2005
Folha 4/7





RODOVIA BR 153 – GO
 Acidentes ocorridos em 2005
 Folha 5/7

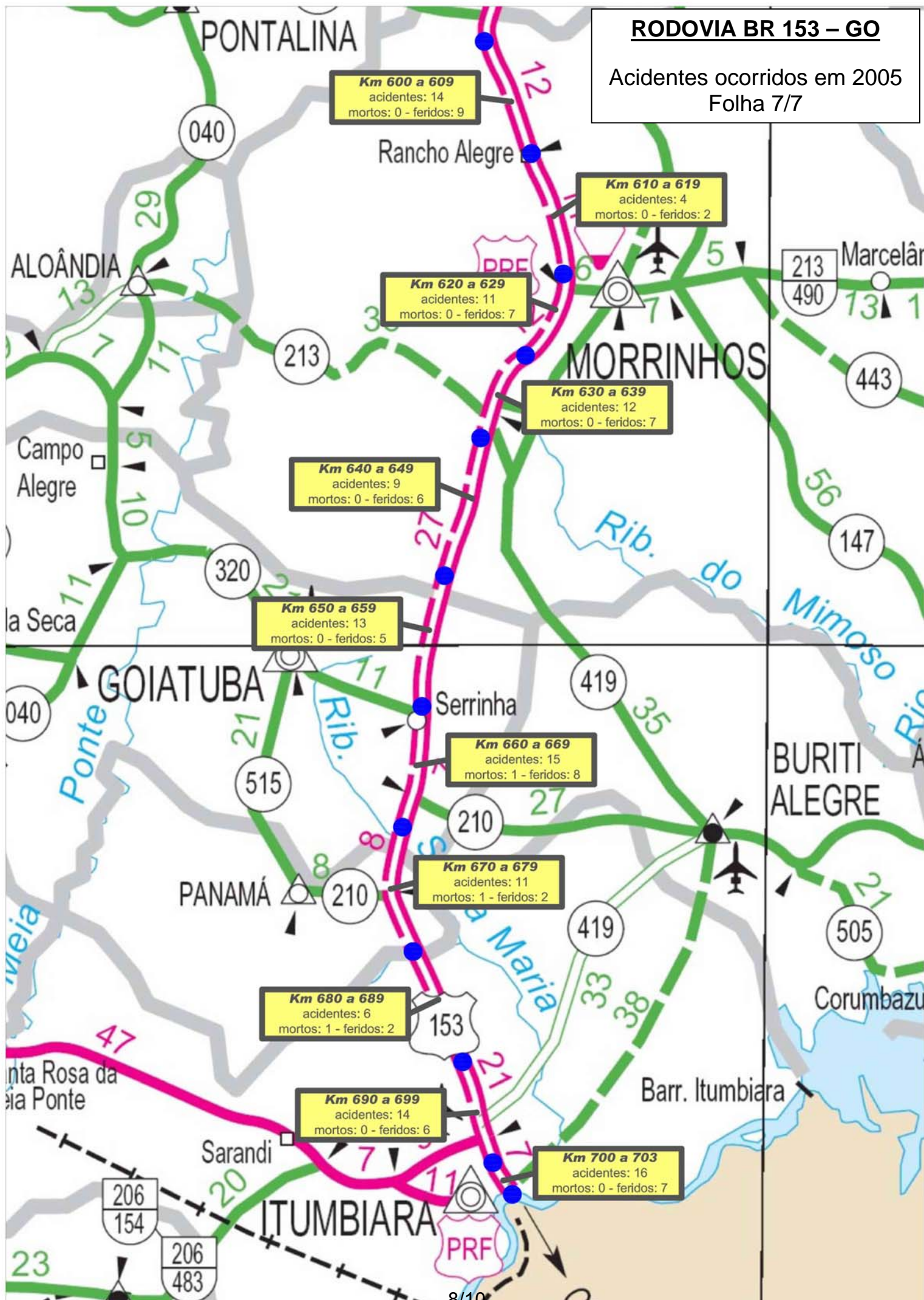


RODOVIA BR 153 – GO

Acidentes ocorridos em 2005
Folha 6/7

RODOVIA BR 153 – GO

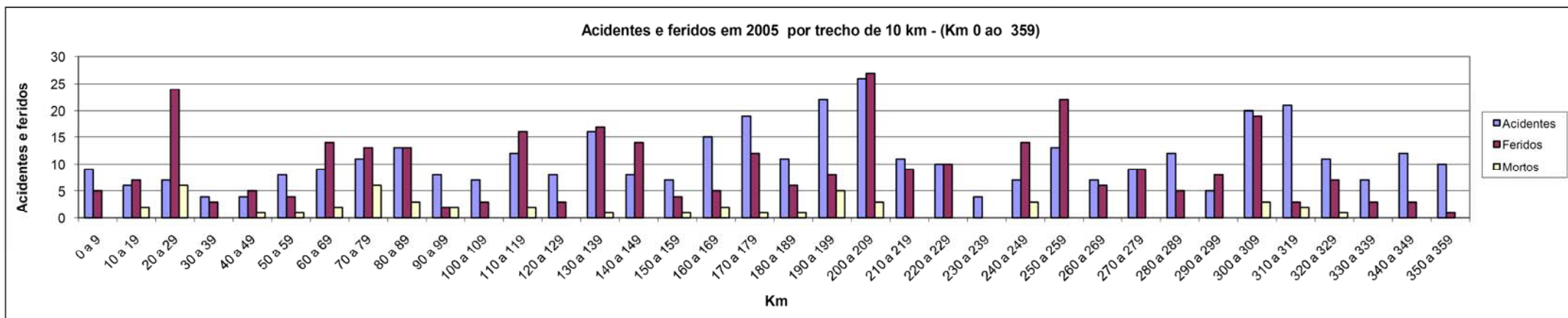
Acidentes ocorridos em 2005
Folha 7/7



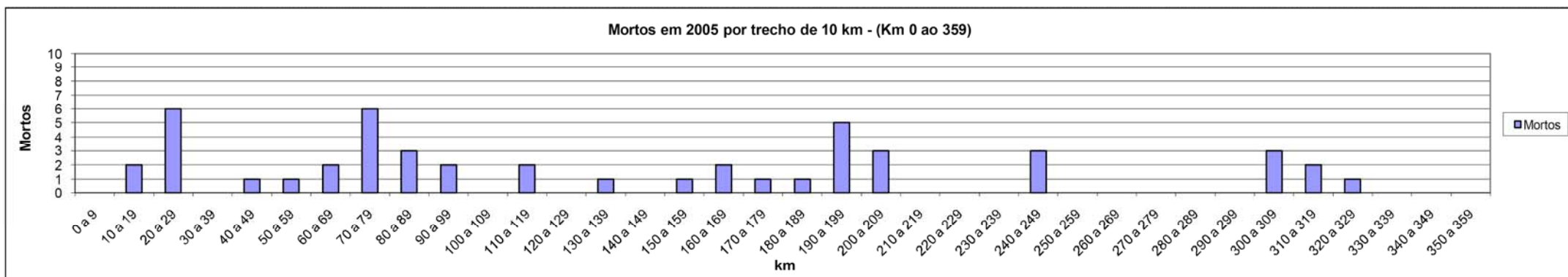
Rodovia BR 153 – GO

Acidentes ocorridos em 2005.

Km	0 a 9	10 a 19	20 a 29	30 a 39	40 a 49	50 a 59	60 a 69	70 a 79	80 a 89	90 a 99	100 a 109	110 a 119	120 a 129	130 a 139	140 a 149	150 a 159	160 a 169	170 a 179	180 a 189	190 a 199	200 a 209	210 a 219	220 a 229	230 a 239	240 a 249	250 a 259	260 a 269	270 a 279	280 a 289	290 a 299	300 a 309	310 a 319	320 a 329	330 a 339	340 a 349	350 a 359
Acidentes	9	6	7	4	4	8	9	11	13	8	7	12	8	16	8	7	15	19	11	22	26	11	10	4	7	13	7	9	12	5	20	21	11	7	12	10
Feridos	5	7	24	3	5	4	14	13	13	2	3	16	3	17	14	4	5	12	6	8	27	9	10	0	14	22	6	9	5	8	19	3	7	3	3	1
Mortos	0	2	6	0	1	1	2	6	3	2	0	2	0	1	0	1	2	1	1	5	3	0	0	0	3	0	0	0	0	3	2	1	0	0	0	



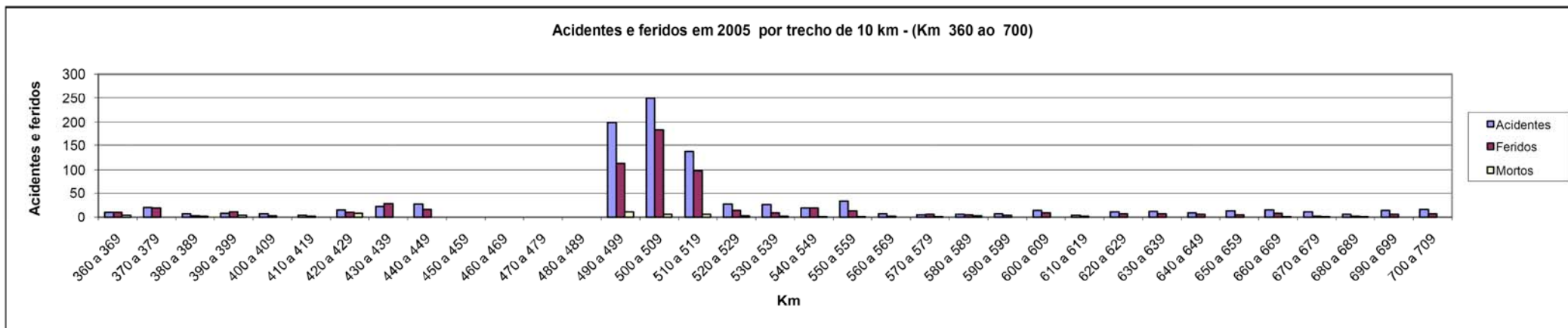
Km	0 a 9	10 a 19	20 a 29	30 a 39	40 a 49	50 a 59	60 a 69	70 a 79	80 a 89	90 a 99	100 a 109	110 a 119	120 a 129	130 a 139	140 a 149	150 a 159	160 a 169	170 a 179	180 a 189	190 a 199	200 a 209	210 a 219	220 a 229	230 a 239	240 a 249	250 a 259	260 a 269	270 a 279	280 a 289	290 a 299	300 a 309	310 a 319	320 a 329	330 a 339	340 a 349	350 a 359
Mortos	0	2	6	0	1	1	2	6	3	2	0	2	0	1	0	1	2	1	1	5	3	0	0	0	3	0	0	0	0	0	3	2	1	0	0	0



Rodovia BR 153 – GO

Acidentes ocorridos em 2005.

Km	360 a 369	370 a 379	380 a 389	390 a 399	400 a 409	410 a 419	420 a 429	430 a 439	440 a 449	450 a 459	460 a 469	470 a 479	480 a 489	490 a 499	500 a 509	510 a 519	520 a 529	530 a 539	540 a 549	550 a 559	560 a 569	570 a 579	580 a 589	590 a 599	600 a 609	610 a 619	620 a 629	630 a 639	640 a 649	650 a 659	660 a 669	670 a 679	680 a 689	690 a 699	700 a 709
Acidentes	10	21	7	8	7	4	15	23	28					199	249	137	28	27	20	34	7	5	6	7	14	4	11	12	9	13	15	11	6	14	16
Feridos	10	20	3	11	3	2	10	29	17					113	184	98	14	9	20	13	2	6	5	4	9	2	7	7	6	5	8	2	2	6	7
Mortos	4	0	2	4	0	0	8	0	0					11	6	6	3	2	1	1	0	1	3	0	0	0	0	0	0	0	1	1	1	0	0



Km	360 a 369	370 a 379	380 a 389	390 a 399	400 a 409	410 a 419	420 a 429	430 a 439	440 a 449	450 a 459	460 a 469	470 a 479	480 a 489	490 a 499	500 a 509	510 a 519	520 a 529	530 a 539	540 a 549	550 a 559	560 a 569	570 a 579	580 a 589	590 a 599	600 a 609	610 a 619	620 a 629	630 a 639	640 a 649	650 a 659	660 a 669	670 a 679	680 a 689	690 a 699	700 a 709
Mortos	4	0	2	4	0	0	8	0	0	0	0	0	0	11	6	6	3	2	1	1	0	1	3	0	0	0	0	0	0	0	1	1	1	0	0

